



Security | **Access** | Video | Intrusion | Converged Solutions | Services

Software House

Software House: Security Innovations that Endure

Managing security in today's dynamic, data-driven, safety-obsessed climate is a challenge – one that requires much more from access control solutions than ever before.

Software House is a recognized leader in security innovations that tackle the ever-changing security requirements a business faces. By leveraging its feature-rich, enterprise-ready platform, organizations are able to put life-safety, identity protection, and business continuity at the center of their security strategy, allowing business leaders to confidently govern across the entire enterprise.

Software House security innovations allow businesses to:

- Take a more integrated, automated approach to managing identities and access
- Proactively address security risks and enforce compliance policies
- Mitigate risk and respond to incidents immediately
- Simplify the experience while strengthening security across the entire enterprise

Trusted and Proven

Software House has been delivering security and event management solutions for decades. Trusted by more than 30,000 of the most security-zealous organizations around the world, the Software House security portfolio is known industry-wide as a workhorse system with finesse.



Browser-based Event Management for Physical Security

Built on a cybersecure web platform, C·CURE IQ lets you manage and monitor access control and video surveillance from anywhere in the world. Formerly known as C·CURE 9000 web-based client, our adaptive interface allows every user from front-desk front-desk reception to security operations management gets the information they need when they need it. Along with native video surveillance for live monitoring and forensic search, C·CURE IQ optimizes security operation from a single, intuitive platform.

C·CURE IQ enables you to easily perform everyday security tasks such as managing personnel records, assigning clearances and monitoring video tours. Alarm monitoring is adaptive with a variety of visually dynamic event viewing options for proactive response to critical security risks. React to incidents with investigative workflows including video search, event log and video clip exports. C·CURE IQ is built for VideoEdge NVRs, enabling superior live monitoring, smart streaming, forensic search workflows increasing situational awareness for security operators. s never compromised, and the security team is free to focus on more pressing operational needs.

Features that Matter

- Alarm Intelligence
- Spatial Intelligence
- Tag Management
- Customizable UI
- Forensic Responses
- Streamlined and Intuitive

Our goal is simple: Empower organizations to protect their people and property while giving them the tools required to be more productive.



Intuitive Security Solution for 24/7 Mission Critical Security

C-CURE IQ Security Intelligence

In a world increasingly overwhelmed by data, security operations are not exempt. Large enterprises can find themselves submerged in hundreds of millions of alarms annually – an avalanche of information beyond the management capabilities of any team. The default reaction? Overlooking this data. This often results from a perception that the majority of these alarms are mere nuisance alarms. Yet buried within are critical events that demand attention, events that directly impact business operations and overall security.

C-CURE IQ Security Intelligence addresses this exact challenge. Sifting through the vast amount of data and ensuring only the vital alarms are prioritized. By delivering discernible outcomes, Security Intelligence dramatically elevates operational efficiency and reduces the time taken to respond to pivotal events. With this groundbreaking dashboard built exclusively for C-CURE IQ browser-based client, we aim to reshape your security landscape, amplifying both security acumen and spatial optimization.

Alarm Intelligence

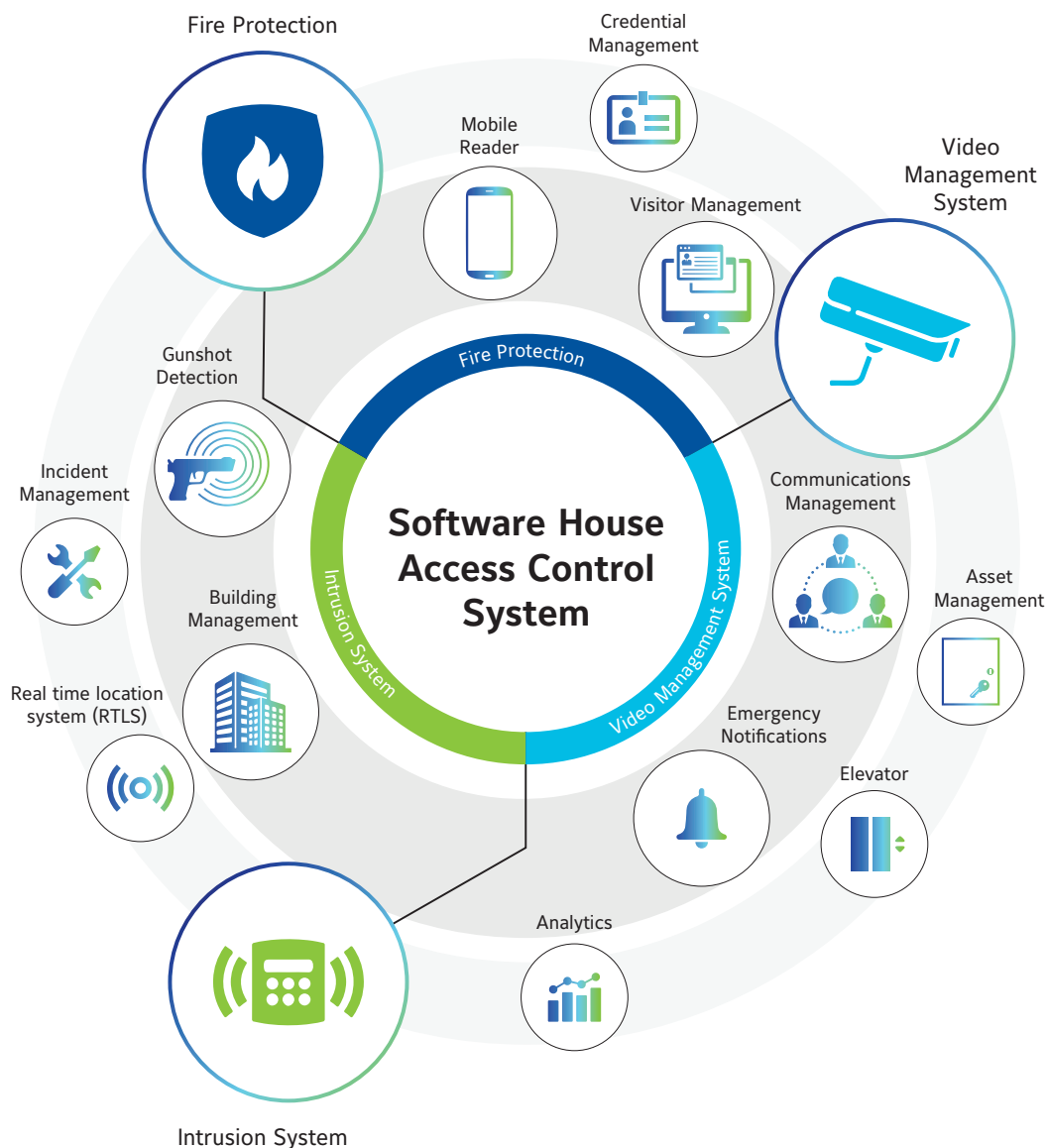
Manage, prioritize, and aptly respond to security alarms with Alarm Intelligence. Crafted for precision, Alarm Intelligence provides a custom rules engine for alarm noise reduction and alarm prioritization. With Alarm Intelligence, hone the security team's focus on the most pressing alerts, ensuring swifter, more effective responses.



Our Portfolio. Your Tailor-Made Solution.

C-CURE security and event management software is the cornerstone of the Software House system, bolstered by a wide portfolio of iSTAR controllers and countless reader technologies.

Our internal integrations and our Connected Partner Program bring together industry-leading solutions allowing partners to market their third-party solutions rounding out our portfolio for a tailor-made solution.



"One of the things that impresses me the most about our C-CURE 9000 solution is that it works so well with other systems and devices from different manufacturers. Going forward, we also have the option of remotely managing other systems and devices in other geographical locations from the same C-CURE work station used for New Ludgate. That kind of flexibility is phenomenal."

Mark Ponzini

Senior Project Engineer Land Securities

UK's largest listed commercial real estate company

Centralized Intelligence for Complete Situational Awareness

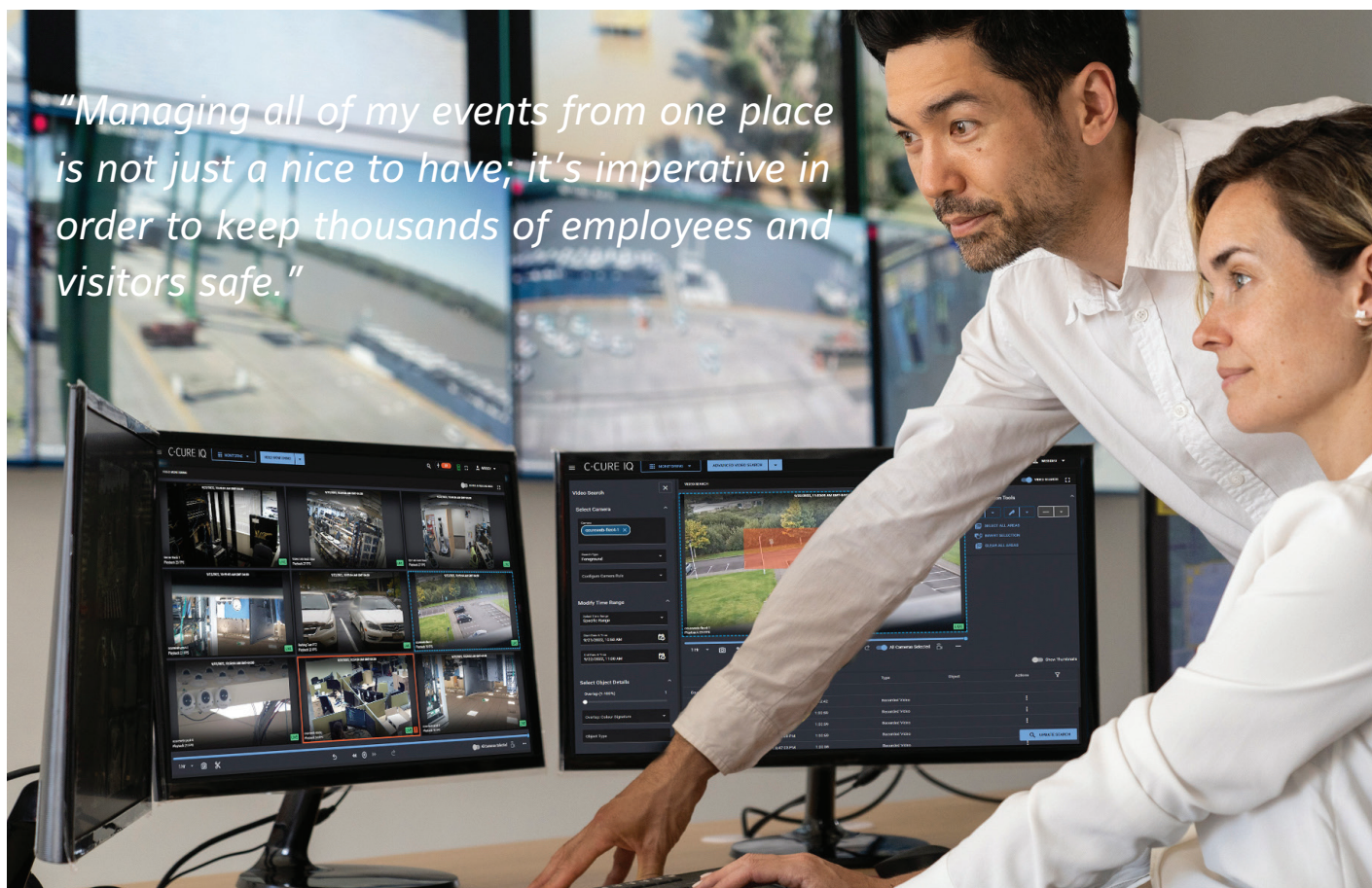
Make the right decision at the right time to keep people safe, property secured, and business operations running smoothly. That's the job, and it takes a comprehensive solution that collects and distills information from various sources to accomplish it.

C-CURE 9000 connects with dozens of other security and business applications for 360-degree visibility of events throughout your facilities to quickly identify risks, spot compliance issues, and make the right decisions quickly. The powerful system translates fast-moving data into actionable intelligence on one intuitive interface, giving you the confidence to quickly mitigate rapidly developing incidents by denying access, triggering video, locking down doors, stopping elevators, or issuing mass notifications.

The difference is clear

Tested and qualified integrations include video C-CURE 9000 delivers top-tier access control while empowering customers to utilize IT-standard tools and distributed architecture. The flexibility of this system grants security professionals the freedom to deploy a unique security solution for their entire business.

"Managing all of my events from one place is not just a nice to have; it's imperative in order to keep thousands of employees and visitors safe."



Our Commitment to Excellence

Software: C-CURE empowers our customers to take full command of their access control, video, intrusion, fire and building automation systems. With the mobile application, plus our thick and thin client offerings, C-CURE 9000 offers ultimate flexibility with ultimate control.

Hardware: Software House's door controllers deliver best-in-class performance with flexible deployment options for both centralized and distributed architectures. We lead the industry in our continued support of legacy hardware as part of our commitment to protecting the investment our customers make in us.

Cyber: We continue to set the bar in cyber security and are relentlessly dedicated to ensuring your data is protected and your networks secure. To keep your hardware and software protected, our products utilize the latest encryption standards and protocols paired with extensive penetration testing and strict IT policy compliance.

Integrations: Our solution is made more powerful by integrating with the systems our customers are already using. We support a deep library of integrations to the most widely used security, building, and enterprise software solutions, and our integrations are thoroughly tested and updated regularly.



About Johnson Controls

At Johnson Controls (NYSE:JCI), we transform the environments where people live, work, learn and play. As the global leader in smart, healthy and sustainable buildings, our mission is to reimagine the performance of buildings to serve people, places and the planet.

Building on a proud history of nearly 140 years of innovation, we deliver the blueprint of the future for industries such as healthcare, schools, data centers, airports, stadiums, manufacturing and beyond through OpenBlue, our comprehensive digital offering.

Today, with a global team of 100,000 experts in more than 150 countries, Johnson Controls offers the world's largest portfolio of building technology and software as well as service solutions from some of the most trusted names in the industry.

To reach out to our team, please contact Software House Sales here: <https://www.swhouse.com/home/contactus>